

Alachua Conservation Trust *Gazetteer*



FALL 2016
"A Bend On the Santa Fe River"

Photo By Kim Davidson

UPCOMING EVENTS

SEPTEMBER

- 17 Native Plant Walk at Kathy Cantwell Trail – led by Susan Marynowski
- 17 Fall Migration Bird Count at PCL - led by Ivor Kincaide
- 23 TLC – Fantastic Friday: Lotus Lore
- 24 Santa Fe River Preserve Trash Clean-up
- 30 Prairie Creek Preserve & Conservation Cemetery Addition Opening

OCTOBER

- 7 TLC – Fantastic Friday: Beginner Botany
- 22 Know Your Tree - Basic ID Workshop at Witness Tree Junction – led by Meg Niederhofer
- 23 CBI's Annual PCCC Memorial Celebration
- 28 Pithlachocco Rises III at First Magnitude Brewing

NOVEMBER

- 4 TLC – Fantastic Friday: Tree-mendous Trees
- 5 CBI's Advanced Directives Workshop – led by Jim Wagner
- 12 Fall Santa Fe River Paddle - led by Mark Larson
- 20 CBI's What's a Body To Do - led by Freddie Johnson

DECEMBER

- 1 HHH - Annual Homestead Holidays Event
- 9 HHH - Candlelight Visits Event
- 10 Winter Bird Walk – led by Ivor Kincaide
- 16 ACT's Annual Holiday Mingle
- 30 Year End Paddle Down Prairie Creek - led by Tom Kay

JANUARY

- 6 New Year, New Adventure Paddle - led by Tom Kay
- 7 Longleaf Planting at Little Orange Creek Preserve
- 21 Little Orange Creek Preserve - Grand Opening
- 21 Longleaf Planting at Little Orange Creek Preserve

FEBRUARY

- 3 Spring Paddle at Withlacoochee Gulf Preserve - led by Tom Kay

MARCH

- 18 Conservation Stewards Awards

Details for each event will be posted on ACT's website and via social media: www.AlachuaConservationTrust.org

Get e-notices on upcoming events by joining our email list on ACT's website, or "liking" us on our Facebook page.



ALACHUA CONSERVATION TRUST: THE NATURAL LEADER

Board of Directors

- President* - **Pegeen Hanrahan**, P.E. Environmental Consultant
- Vice President* - **Trey Greer**, Associate Director, University Writing Program - UF
- Secretary* - **Alison Blakeslee**, Private Investigator - Fisher & Blakeslee
- Treasurer* - **Mike Castine**, AICP, Senior Planner - Alachua County Growth Management
- Anne Barkdoll**, Ph.D., Biologist - Florida Div. of Parks & Recreation
- Bill Bryson**, Publisher/Business Owner
- Fred Cantrell**, University Business Affairs - UF, Retired
- Kim Davidson**, M.D., Family Practice Doctor
- Bruce Delaney**, Asst. VP for Real Estate - UF Foundation, Retired
- Richard Hamann**, J.D., Associate in Law, Ctr. for Gov't Responsibility - UF, Retired
- Charlie Houser**, Certified Forester/Realtor - Saunders Real Estate Forestry Group
- Howard Jelks**, Fish Biologist - U.S. Geological Survey
- Muthusami Kumaran**, Asst. Professor in Dept. of Family, Youth & Community Science - UF
- Laurel Nesbit**, Project Manager - Alachua County Crisis Center
- Peter NeSmith**, Botanist - Water & Air Research, Inc.

STAFF

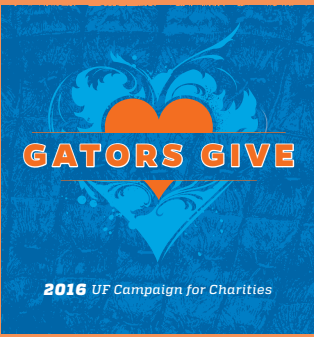
- Tom Kay**, Executive Director
- Ivor Kincaide**, Land Manager
- Mark Larson**, Assistant Land Manager
- Lesla Holder**, Office Manager
- Chris Burney**, Project Manager
- Melissa Hill**, Project Coordinator
- Jen Lomberk**, Staff Attorney
- Resident Caretakers: Seaton & Star Tarrant



Since 1988, the mission of Alachua Conservation Trust (ACT) has been to protect the natural, historic, scenic, and recreational resources in and around Alachua County, Florida. ACT protects land through purchase, donation, and conservation easements.

ACT is a 501(c)3 non-profit charity and receives no government grants for general operating support; we rely on contributions from private individuals, corporations, and foundations. Donations may be tax deductible, however ACT does not provide tax advice.

Alachua Conservation Trust's charitable solicitation number is **CH12693**. A copy of the official registration and financial information may be obtained from the Division of Consumer Services by calling toll-free (800) 435-7352, and the department's website, www.800helpfla.com. Registration does not imply endorsement, approval, or recommendation by the State.



Gator's Give, and Stater's Too!

Alachua Conservation Trust is excited to announce that, beginning this fall, it's been accepted into not only the University of Florida's annual Campaign for Charities (UFCC) – our seventh consecutive year of participation – but also the Florida State Employees state-wide Charitable Campaign (FSECC)! Both of these employee giving initiatives kick off in September and run through late October/early November, allowing you as a UF or state employee to sign up in various ways, including payroll deduction, to support your favorite charitable cause or causes. Since 2009, ACT has received nearly \$150K in direct support through the UFCC program alone, and has equally high hopes for the FSECC campaign as well. UF's Campaign for Charities, now over 25 years old, has encouraged faculty and staff, including those from UAA and UFF, to

support the non-profit organizations that they believe help make their community a stronger, better place to live, and in doing so, UF employees have donated over \$1M annually to 100 + individual agencies, including ACT. Similarly, the FSECC program has generated \$94M for charitable concerns in its 36-year history, allowing its participants to contribute to causes that address needs statewide, and ACT is extremely pleased to be considered among those organizations whose conservation work fits into this expanded set of criteria. Your support this year will assist in training 25 interns, provide environmental education to hundreds of grade school children, restore over 350 acres, and help conserve over 1,000 new acres of land. So, if you are a UF or State employee, please consider designating ACT your charity of choice. Learn more about these amazing, generous and highly-worthy giving campaigns at the following links:

UF Campaign for Charities - <http://ufcc.ufl.edu/>

Florida State Employees Charitable Campaign - http://www.dms.myflorida.com/workforce_operations/human_resource_management/florida_state_employees_charitablecampaign_fsecc



Florida State Employees' Charitable Campaign

Point. Click. Pledge.

STRANGE THINGS ARE COMING...
SCIENCE TRANSFORMED HIM INTO A MONSTER.
BEER CHANGED HIM EVEN MORE!



PITHLAGOCCO
RISES III
BACK FROM
BENEATH THE
LAKE

SAVE THE DATE
FRIDAY, OCTOBER 28TH
@ FIRST MAGNITUDE BREWERY
IF YOU DARE...

2016 "RISE UP FOR THE SANTA FE" CONSERVATION STEWARDS AWARDS



The 17th Annual Conservation Stewards Awards took place on yet another gorgeous March evening at Prairie Creek Lodge as we honored this year's recipients ~ three guardians of nature and of horses for more than four decades.



Guy Marwick is one of the most well-known conservationists in our region. As the driving force behind the creation of the Silver River Museum and Environmental Education Center in Silver Springs State Park, he has been instrumental to introducing Florida's freshwater springs to thousands of school age children. He served as the director at the Museum & Environmental Education Center from 1987 through 2004. Many of the conservation projects throughout Florida over the last two decades have Guy's fingerprints on them. As Executive Director of the Felburn Foundation, Guy has helped to conserve tens of thousands of acres across Florida and the Southeast. Most recently, the Felburn Foundation has helped with three highly visible local projects: Santa Fe River Preserve, Little Orange Creek Preserve, and Silver Springs Forest. His advocacy for the springs, land conservation and water protection is second to none. We were honored to finally be able to recognize Guy for his incredible stewardship and dedication to furthering land conservation in our region. No doubt, Guy is going to continue to lead in this arena for many years to come.



Mary and the later Peter Gregory founded the Retirement Home for Horses (RHH) in 1983 at their Mill Creek Farm in Alachua, Florida, and have been the guardians of hundreds of abused, starved and neglected horses ever since. RHH gives these noble creatures a better place to live out their remaining days, and the Gregorys' 335-acre Mill Creek Farm of rolling green hills and woods is also permanently protected by a conservation easement that Mary and Peter donated to ACT. Peter, a founding board member of ACT, passed away in March 2014, but Mary and son Paul continue to carry on Peter's legacy of ensuring that this sanctuary remain the forever home for these wonderful horses.



Mary's moving acceptance speech had many in the crowd in tears by its end. She was joined on this special evening by her son Paul, and many RHH supporters, volunteers and friends. As Paul said that evening, "We continue to be inspired by Mary's dedicated stewardship of the retired horses, the wildlife, the woods, and all that makes Mill Creek Farm special." As the cooler months approach, it's a perfect time to go out and visit the horses and Mary. Mill Creek Farm is open to the public on Saturdays only from 11 a.m. to 3 p.m. The entrance fee is 2 carrots, but you will want to bring a lot more. For more information on RHH, visit: millcreekfarm.org

Our deepest gratitude goes out to all of our corporate sponsors. Their support, like yours, is a reflection of what our community values – land conservation, outdoor recreation, environmental education, forest restoration, and scenic, open space. Thank you to everyone who attended or gave to the event. Once again, the Conservation Stewards Awards set a new donation record. Proceeds from the evening went towards ACT's Rise Up for the Santa Fe River Campaign (see page 7) to conserve the remaining river corridor of the Upper Santa Fe River

Mark your calendars - the 18th Annual Conservation Stewards Awards will be held on Saturday, March 18, 2017.



2016 CORPORATE SPONSORS

Live Oak



Longleaf Pine



Cypress



Magnolia



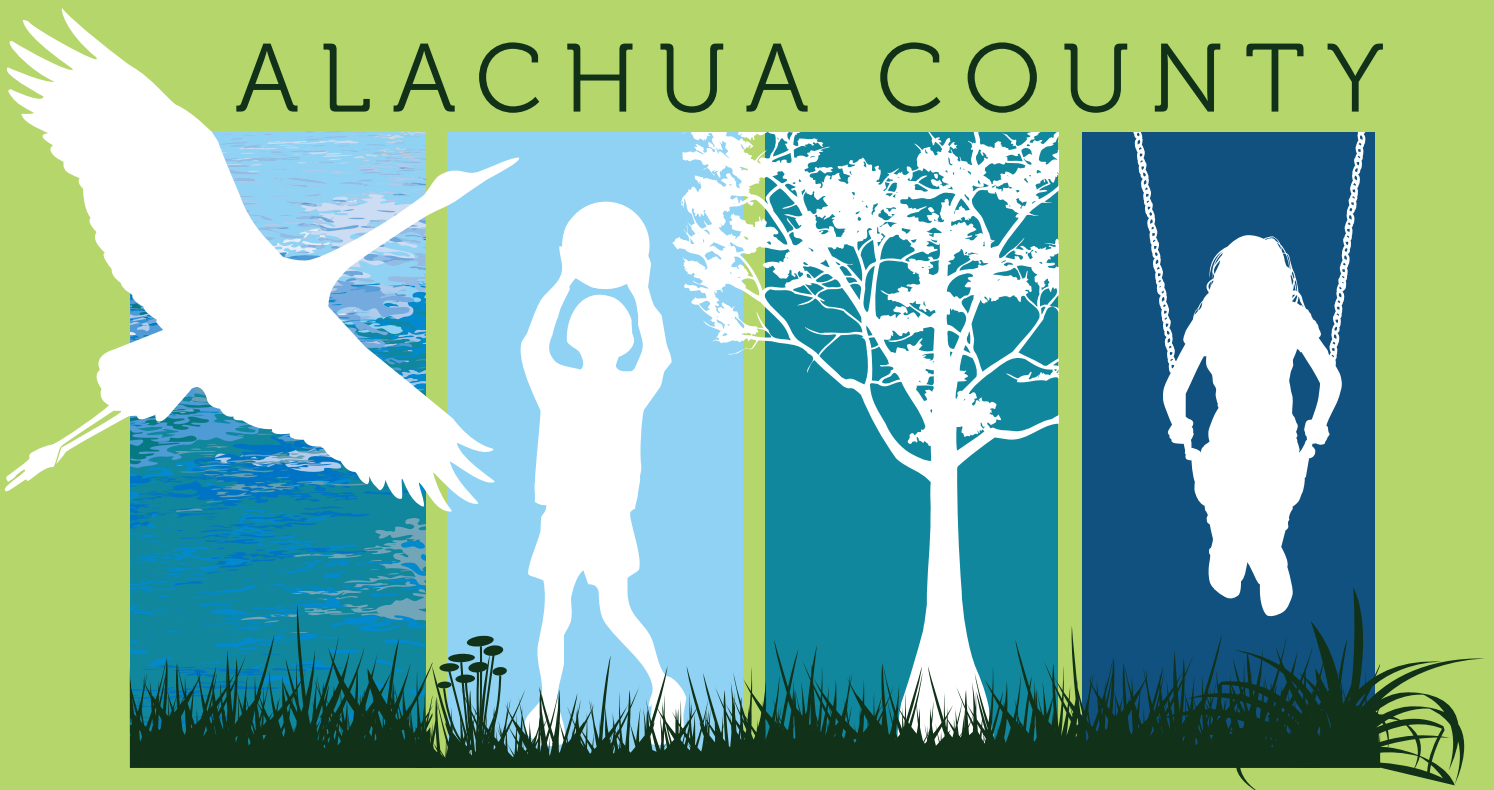
Tupelo



Wiregrass



ALACHUA COUNTY



WILD & PUBLIC SPACES PLACES

Wild Spaces & Public Places *A Voice (and a Vote) for the Wild*

Alachua County residents will once again have a voice and a vote in shaping the future of our community this fall. On Tuesday, November 8th, 2016, voters will have the opportunity to protect the water and wildlife habitat in Alachua County and to improve parks and recreation facilities in all our cities and unincorporated areas by voting “Yes” for Wild Spaces and Public Places. This one-half percent local sales tax, if passed, is expected to generate \$16 million annually - \$130 million over eight years - starting on January 1, 2017.

If voters approve passage of Wild Spaces & Public Places this November, the revenues it generates will help implement the county’s Recreation Master Plan and the City’s 352 Arts Roadmap. Funds from the measure will also pay for recreational improvements in all four quadrants of the county; in June 2016, the County Commission approved project lists from each of its municipalities.

The County’s intention is to expend the bulk of its share - \$74.4 million over eight years – on land conservation. While Alachua County has historically been a leader in the state for land conservation, with no local funding and very little state funding available over the last five years, new conservation land protection in Alachua County has dwindled. With this new source of funds, the Alachua County Forever program will once again lead in land conservation at a time when it is most needed. As Gainesville and Alachua County continue to grow, both new and long-time residents will need new and improved places to recreate and enjoy the outdoors – it’s what we love best about our community.

Wild Spaces & Public Places will help protect our drinking water and ensure that the quality of life that drew so many of us to call this place home will continue to be exceptional, but this county wide measure needs your support. Let’s keep Alachua County wild and active. *Please VOTE YES for Wild Spaces & Public Places on November 8th, 2016.*

Want to Volunteer or Learn More about the Campaign, visit: www.Facebook.com/WildSpacesPublicPlaces or call us at 352-373-1078



If you would like to sponsor an internship or contribute to the Ryan Crowder Memorial Internship Fund, you may do so by specifying your intention online at: <https://app.etapestry.com/onlineforms/AlachuaConservationTrustIn/donations.html> and choosing “Ryan’s Fund - Internship Program” in the fund dropdown, or by making that notation on your check mailed to ACT at **7204 SE CR 234, Gainesville, FL 32641**

If you are a student interested in the prospect of working with Alachua Conservation Trust as an intern in an upcoming semester, please contact Assistant Land Manager Mark Larson: act.markl@gmail.com



The Next Generation of Conservation

Despite the brutal heat, the summer of 2016 was an especially busy and productive one for ACT’s extended land management and restoration crew of interns and youth volunteers. Even as it multiplies our ability to achieve critical resource management goals across all of our properties and preserves, ACT’s internship program continues to provide hands-on learning opportunities for University of Florida and Santa Fe students in wildlife ecology, environmental studies, and the school of forest resources and conservation to connect their education to real world experience. This summer alone, interns completed a 550’ section of boardwalk on the orange trail leading to Prairie Creek that will expand and improve recreational opportunities for all trail users. They were also able to join regular land management staff on two prescribed fires, helping them to better understand the importance of controlled burns for wildfire reduction and ecological restoration. In total, interns contributed to the restoration of approximately 76 acres of sandhill and mesic flatwoods at Sante Fe River Preserve and Prairie Creek Preserve. Interns also provided invaluable service in completing Prairie Creek Conservation Cemetery improvement projects such as existing site maintenance, records updating and management, maintenance of existing trails, digging new graves and even helping out on occasion with green burial ceremonies. Furthermore, interns and staff completed annual exotic plant treatments on three of ACT’s largest preserves, specifically targeting five invasive species that threatened an area well over 25 acres. ACT is immensely grateful for the opportunity to work with these young conservationists and provide them with practical resource management experience, as well as to reap the benefits of their incredibly enthusiastic and increasingly skilled labor.

Working with UF’s Young Entrepreneurs – Year Eight!

Each year, UF’s Young Entrepreneurs for Leadership & Sustainability (YELS) summer program gives college bound high school students the opportunity to live, work, eat, and play on the campus of the University of Florida for four weeks while concurrently learning about social entrepreneurship, being inspired to solve social problems, and practicing sustainability. ACT is now in its 8th year as a service site sponsor for the YELS program, and this summer, we hosted 16 of the program’s 56 participating high school students from around Florida as they completed their daily community service work for both ACT and Conservation Burial Inc. Over the last three weeks of summer, YELS students helped plant thousands of longleaf pine seedlings, prune the Prairie Creek Preserve trails, clean up trash along the county roads around Prairie Creek, and remove prickly pear in the cemetery among many other tasks. Sincerest thanks to UF’s Dr. Kristin Joos for mentoring this program – now in its 10th year - and for providing ACT with the ability to participate in this extremely worthwhile endeavor.





Santa Fe River Preserve

Patience, Perseverance and YOU

Some journeys end where you hope they will when you begin, even if the path that leads you there is nothing like you expected when you set out on your way. The acquisition of the 443 acre River Creek Preserve parcel up on the Santa Fe River near Worthington Springs is one of those journeys.

When KBN Engineering and Applied Sciences were hired by the County to conduct the Alachua County Ecological Inventory project in 1996, the Santa Fe Project, which included this parcel, was identified at the highest priority level for conservation. In 2004 during the real estate run-up, the property was purchased with development in mind. Over the next several years, both Alachua County and ACT made repeated offers to acquire the land while at the same time plans were forming by the owner to develop 99 homes on the site.

When ACT was finally able to get the property under contract in 2009, the landowner had become in arrears with the bank and foreclosure proceedings ensued. Legal issues tangled up the property in court for nearly a half a decade. During this time, ACT and Alachua County each acquired nearby parcels that became the start of Santa Fe River Preserve. In January 2015, patience and perseverance paid off. The bank that would soon

own the property called ACT informing us that it would soon be out of foreclosure proceedings, and ACT immediately began negotiating a deal to conserve the hardwoods, seepage springs, river frontage, creeks, basin swamp, floodplain forest and pine forests that makeup this unique landscape. By mid-July, a purchase contract was signed - at a fraction of the price negotiated several years before.

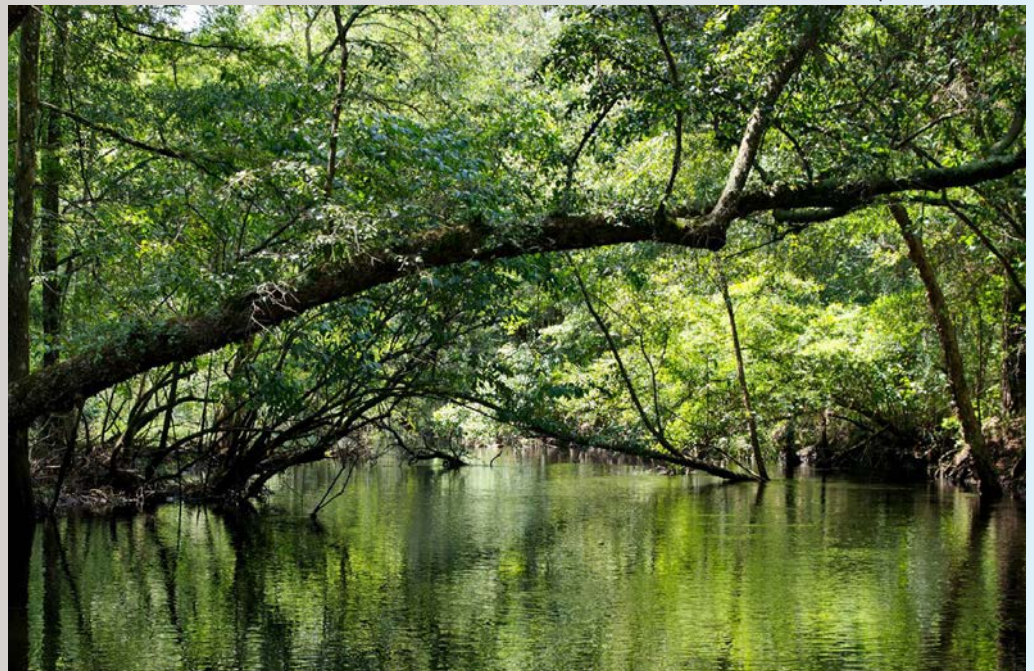
In mid-2015, ACT kicked off the \$2 million Rise Up for the Santa Fe campaign to acquire the River Creek Preserve parcel and several other targeted parcels along the Santa Fe River. A \$1 million commitment from an incredibly generous private foundation put the campaign on the right track shortly after its start. In order to guarantee the acquisition and close on the bank's deadline, The Conservation Fund provided ACT with a \$1 million loan that was backed by the \$1 million foundation commitment, and the acquisition was completed in late November 2015. When ACT began reaching out to you, our donors, friends, neighbors, partners and concerned citizens to protect this integral part of Alachua County's natural character and one that is facing new and constant threats, hundreds of you answered the call and rose up for the Santa Fe. As a direct result of your support, ACT's Santa Fe River Preserve expanded by 443 acres, resulting in the protection of even more of the river corridor and its critical wildlife habitat and recreational lands.

Photo By Charlie Houder

With your ongoing generosity, ACT is actively working to acquire an additional 300-700 acres by early 2017. Your continued support is helping to conserve the scenic upper Santa Fe River and preserve one of our most treasured wild places. Furthermore, ACT's efforts to leverage this acquisition as match for additional land conservation funds has attracted interest from government agencies that want to partner on working to protect the water resources and wildlife habitat of our scenic region.

Here, the awe of nature is at its best. Thanks to YOU, it is now protected forever. Rise Up for the Santa Fe today by contributing at:

http://alachuaconservationtrust.org/index.php?alachua_v2/donations.



Hat's off, ACT supporters; we couldn't have done it without you!

Staying Connected

Prairie Creek Preserve Grows

By 15 Acres

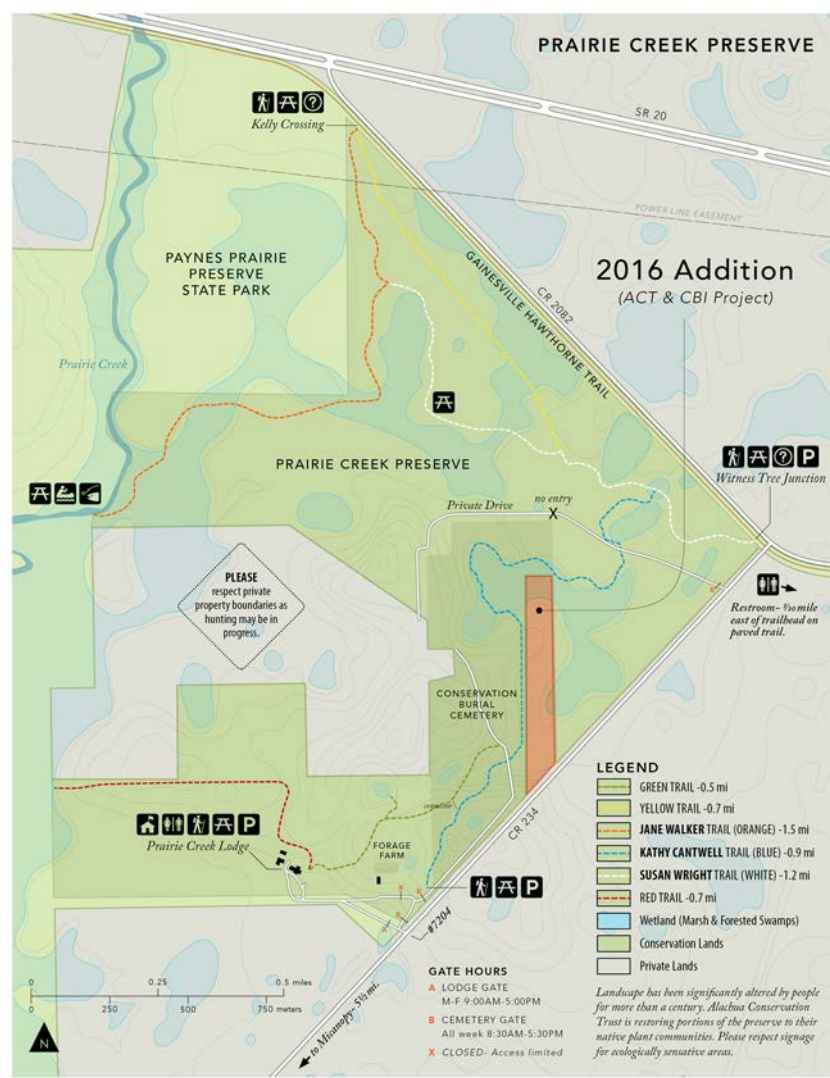
Unveiling Set for September 30th

On Paynes Prairie Preserve State Park's Optimal Boundary list and surrounded on three sides by Prairie Creek Preserve and Prairie Creek Conservation Cemetery, the 15 acre Geiger tract has long been a priority acquisition for Alachua Conservation Trust. In December 2015, ACT partnered with Conservation Burial Inc. (CBI) to jointly purchase the first piece of conservation land bought, in part, with the proceeds from the burials at Prairie Creek Conservation Cemetery (PCCC). PCCC is the first conservation burial cemetery in Florida and one of only a handful nationwide.

“Conservation burial” means that not only does CBI implement nationally-standardized “green burial” cemetery policies, but also that they have set the bar even higher and also achieve conservation work by funding the purchase of protected natural areas with the proceeds from each burial.

This new addition of conservation land to Prairie Creek Preserve has a diversity of habitats that includes cypress swamps and beautiful upland hardwood forest. Proceeds from the burials allowed ACT and CBI to secure the land and the landowner gave ACT six months to raise the remaining half of funds necessary to acquire it. The project received a major boost when an anonymous donor made a \$20,000 challenge gift. This generous matching donation encouraged many of you to give as well to this worthy conservation acquisition project. Thank you to everyone who donated and helped us achieve our goal of permanently protecting this mix of flatwoods and hammock. Five years of negotiations with the landowner were rewarded with a day of joy and relief when the land was finally acquired outright in early June.

On Friday, September 30th, 2016, ACT and CBI will host a joint-celebration of this new addition where we plan to unveil a new trail loop and picnic area. Please come out to Prairie Creek Preserve and help up celebrate this unique conservation success story!



In Memoriam – Arthur Saarinen

It is with great sadness that we recognize the passing of nationally respected environmental engineer, longtime ACT benefactor, and former Director of the Board Arthur Saarinen on May 18, 2016, at the age of 88. Arthur was a native Floridian, Alachua Countian and loyal Gator. During his illustrious career, Arthur served as president of the Florida Engineering Society, the Florida Water Pollution Control Association and the International Water Environment Federation. An avid international traveler – both for work and for pleasure - Arthur was invited to teach in the UF Department of Environmental Engineering Sciences after retiring from the private sector, and served our community on many local advisory boards in his later years. Arthur and his family donated the 78-acre Saarinen Preserve to ACT in 2006, and we were fortunate to have him cut the ribbon at the Preserve's long-awaited "Public" Grand Opening in April 2015. Our deepest condolences to the Saarinen family, who honor Arthur's memory with their continued support of ACT and its conservation mission statewide.

Springs Ambassadors Camp 2016

Springs Eternal Project

Alachua Conservation Trust



How do you create the next generation of environmentalists - not just get kids into the woods and waterways where they learn to love them as visitors and passers-through - but to really treasure nature, their own local nature, in a passionate and mobilized way, with urgency and purpose?

For those who make their mission the preservation of land, water and air resources, as well as the diversity of plant and animal species, this is the age-old question. What will it all mean if we have no one to carry on the work? And what will our world become if today's children don't do an even better job of protecting our ever-imperiled natural resources than

we did? The answer is simple – endeavor to train but seek to inspire. And this is exactly the core purpose behind Lesley Gamble's Springs Ambassadors summer camp program, which ACT was honored to help develop and support in its inaugural year as an off-shoot of Lesley's and John Moran's Springs Eternal Project. Designed to immerse middle-school children in the majesty and fragile beauty of our North Central Florida springs while simultaneously equipping them to carry a critical conservation message back to their peers, the 2016 camp was conducted from June 12th through June 17th at Gilchrist Blue Spring and included 20 young people from all around the state ages 11 to 14.

Participants came to the program passers-through, but they went home ambassadors – for the springs, for the environment, for the future of our amazing and ever-diminishing natural Florida landscape. Many thanks to Lesley Gamble for envisioning this program, and to all of the counselors, instructors and providers whose contributions can only be measured by the magnified number of future conservationists their campers go on to inspire: Tom Morris, Katie McDonald, John Moran, Margaret Ross Tolbert, Karen Chadwick, Cynthia Barnett, Lars Andersen, Blair Banfield, Charles Emerson, Erika Ritter, Leslie Heffington, Amy Horstmeyer, Joseph Nieves, Kristen Grace, Jenny Adler, Eric Flagg, and Val Leitner/Forage Farm. Additional thanks - beyond measure - to all of the sponsors of the 2016 Springs Ambassadors Camp program: Kim Davis/Blue Springs, The Wrays/Ginnie Springs, First Magnitude Brewery, Florida Springs Institute, the Smithsonian Institution, Felburn Foundation, Lydia B. Stokes Foundation, the Florida Humanities Council, Wells Fargo, Honda of Gainesville, Akira, Waterlust, Water/Ways, Our Santa Fe River, High Springs Adventure Outpost and Swallowtail Farm.



Tuscowilla Learning Center FALL 2016 Programs

Tuscowilla Cabin, Tuscowilla Prairie, Micanopy, FL

Lotus Lore:

Friday, September 23rd
8:30-10:30

This class is geared for children ages 3-7

America's largest native blossom, *Nelumbo lutea* or American Lotus, is painting Tuscowilla Lake yellow with sweet smelling blossoms. At TLC's September program, children learn about these freshwater blossoms through a variety of interactive opportunities. The TLC team present activities that introduce flower part terminology and historical uses of the lotus. We play a game to introduce attendees to the water resistant properties of lotus leaves that have intrigued present day scientists. Lotus parts and pieces are used to create music and an art piece to take home.

Beginner Botany:

Friday, October 7th
9:30-11:30

This class is geared for children ages 8-12

The October class includes guided nature walks and discussions that introduce children to the basics of botany. Attendees learn to notice differing leaf shapes and arrangements, and the various stages of the plant life cycle. Students work in groups to look closely at on-site examples of plant parts and log their observations in nature journals made on site. This class is all about helping children to develop a greater awareness of the diversity of plants that make up the ecosystems of Tuscowilla Prairie.

Tree-mendous Trees:

Friday, November 7th
9:30-11:30

This class is geared for children ages 3-7

When autumn comes to Florida, TLC celebrates the importance of trees. We look closely at bark texture and create wearable bark and leaf rubbing vests. Attendees transform themselves into part of the forest habitat. While walking, we ponder questions like, "What is the difference between deciduous and evergreen? How about crenate and palmate? What types of animals call the towering trees home?" Come get to know the tree-mendous world of green giants on the Tuscowilla Preserve, and stay for a climb or two.

SAVING SEA TURTLES STATEWIDE

In early 2016, Alachua Conservation Trust was honored to partner with UF's Levin College of Law, the Sea Turtle Conservancy and UF's School of Natural Resources and Environment to accept the award of substantial grants from the National Fish & Wildlife Foundation (Gulf Coast Conservation Grants Program), the Sea Turtle Grants Program, and the Archie Carr Center for Sea Turtle Research in order to conduct a two-year feasibility assessment for using coastal easements to conserve nesting sea turtle habitat throughout the State of Florida. This project, composed of two phases, will evaluate the potential for acquisition of conservation easements and other interests on priority beachfront locations in order to preserve nesting sea turtle sites in Phase I, which will commence in August 2016.

Every year the destruction of sea turtle nesting beaches in Florida results in significant loss of suitable nesting habitat. Habitat destruction occurs from a variety of human activities including beachfront development, coastal armoring, pollution, vehicular traffic, creation of inlets and jetties, and beach erosion. In Phase I of the project, ACT will use grant funds to identify priority locations where conservation easements and other types of interests would most greatly maximize the preservation and maintenance of sea turtle habitat. The majority of the work will be conducted by UF grad student

Melissa Hill, whose coursework is also being funded by the project, and recent UF Law School grad Jen Lomberk – ACT's new Sea Turtle Dream Team.

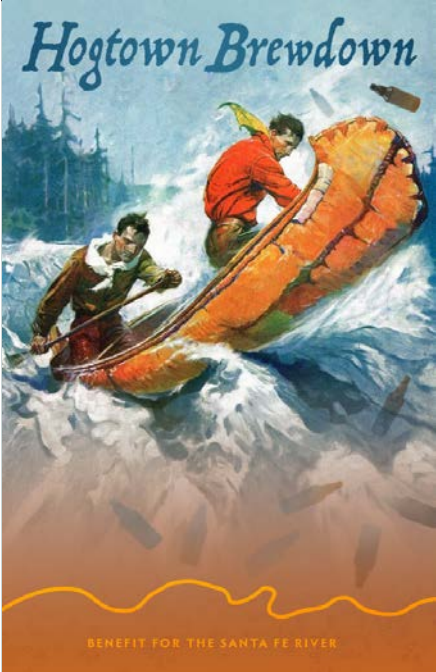


Melissa Hill



In Phase II, Alachua Conservation Trust and its Sea Turtle team will endeavor to negotiate the acquisition of conservation-focused interests in identified priority locations with willing property owners throughout the coastal regions. Acquiring conservation interests in these lands will protect nesting habitats from future development indefinitely, and will increase the stewardship that is necessary to maintain the conditions of healthy sea turtle habitats. ACT will also work to increase habitat conservation awareness among coastal residents throughout Florida, and is extremely excited about the prospect of facilitating the protection of this vast area of critical wildlife habitat. Join us in welcoming aboard both Melissa & Jen!

Jen Lomberk



A Red Letter Year for Corporate Support!

Many thanks go out to the remarkable Hogtown Homebrewers' Club – voted 2016 AHA Radegast National Homebrew Club of the Year – for its 5th consecutive year of amazing corporate support. Funds raised in April at the 5th Annual Hogtown Craft Beer Fest, as well as at the December 2015 and April 2016 Hogtown Brewdown food & beer pairing competitions – which pitted club members against one another for the glory of claiming best food, best beer, best dessert and best combo bragging rights - will be used as part of the Santa Fe River Preserve Phase II acquisition funding which is slated for completion in late 2017. ACT's very special thanks to club members Ron & Kris Minkoff, and PJ & Gina Van Blokland for all their organizational blood, (beer) sweat and tears in coordinating both wildly popular Brewdowns at Prairie Creek Lodge this past year. You can learn more about the Brewers and their upcoming 2017 Hogtown Craft Beer Fest at: <http://www.hogtownbeerfest.com/beerfest/about.cfm>

Thanks, thanks and more thanks also go to Solar Impact and Swamp Head Brewery for joining forces again in 2016 to organize Gainesville's Second Annual Tree Fest and for making ACT its charity recipient two years running! Tree Fest 2016 was held on April 23rd at Swamp Head Brewery in recognition of Earth Day and Arbor Day, as well as to specifically support the land restoration efforts of Alachua Conservation Trust. As a direct result of the support generated by



donors and sponsors of this year's Tree Fest event, 53,000 longleaf pine seedlings and wiregrass plugs already have or will yet be planted at appropriate times throughout the coming year at the 2,867 acre Little Orange Creek Preserve near Hawthorne, Florida. Please join us in recognizing *Michael Carr & Assoc. - UBS Financial Services, Scarborough Insurance, Ball Corp., Cone Distributing, Inc., Bronson Ace Hardware, Manisha Ranade & Anand Rangarajan, Bennett & Arlene Brummer, McGurn Investment Co., Northwood Oaks Veterinary Hospital, Soil & Water Engineering Technology, Scherer Construction, Evelyn K Jones, MD & Ronald McKenery Jones Jr., Hydrosphere Research, Mike & Busy Byerly, Diana & Jeff Shamis, Will Stewart, Claire Sever, Charles & Joan Rockwell, Mark Robinson, Fracture, Bouncin' Big, Alma Mater Custom Apparel, and Lucky's Market Gainesville* for their generous support of this worthy event! If you couldn't make it out to Swamp Head for Tree Fest this year, we'll plan to see you at next year's Fest on April 22, 2017!





ALACHUA CONSERVATION TRUST

7204 SE County Road 234
Gainesville, Florida 32641

SAVE THE DATE

MARCH 18, 2017

CONSERVATION STEWARDS AWARDS

ACT: FACTS AT A GLANCE

- 1 ESTABLISHED IN **1988** AS NON-PROFIT LAND TRUST
- 2 DIRECTLY PARTICIPATED IN THE PURCHASE OF **18,884** ACRES
- 3 CURRENTLY OWNS **3735** ACRES, AND 2 HISTORIC STRUCTURES
- 4 PERPETUAL CONSERVATION EASEMENTS ON MORE THAN **3200** ACRES
- 5 HUNDREDS OF ACRES BURNED ANNUALLY
- 6 SUCCESSFULLY LED 4 PUBLIC REFERENDA, 2 FOR FUNDING **\$60 MILLION**, AND 2 FOR CREATING REGISTRY OF PROTECTED PUBLIC PLACES
- 7 OVER **500** ACTIVE SUPPORTERS WHO DONATE AT LEAST ONCE EVERY TWO YEARS
- 8 OVER **5200** VOLUNTEER AND COMMUNITY SERVICE HOURS IN THE PAST 12 MONTHS
- 9 **50,000** LONGLEAF PINES PLANTED
- 10 1 OF ONLY 4 NATIONALLY ACCREDITED LAND TRUSTS IN FLORIDA
- 11 **18,000** WIREGRASS SEEDLINGS PLANTED
- 12 ACTIVE LAND CONSERVATION PROJECTS IN 8 COUNTIES OF NORTH CENTRAL FLORIDA



A NATIONALLY RECOGNIZED LAND TRUST

Out of 1700 land trusts across the country, Alachua Conservation Trust received the 2013 National Land Trust Excellence Award from the Land Trust Alliance. The award represents the highest single recognition that a land trust can receive in the United States.

