

ALACHUA CONSERVATION TRUST

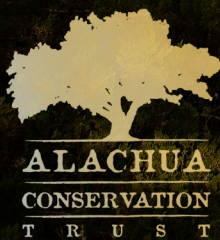
Gazetteer

“413 acres of Florida’s Nature Coast”

*Learn more about Withlacoochee Gulf Preserve on
page 6*

SPRING 2015

Hogtown Craft Beer Festival	1
Conservation Stewards Awards	2
Little Orange Creek Preserve	3
Hodor Preserve	4
Rockwood Park	4
New Board Members	4
UPCOMING EVENTS	1
LAND MANAGEMENT UPDATE	5
PRESERVE PROFILE	6



UPCOMING EVENTS

FEBRUARY

- 14 Forage Farm & ACT- Native Pollinator Workshop
- 15 SANDHILL STAGE- Acoustic Eidolon
- 18 TLC- Wild Wednesday: Migration
- 24 "Nature Photography" Presentation by John Moran

MARCH

- 1 "CBI- "Choices in After-death Care" Presentation & Tour by Freddie Johnson
- 14 16th Annual CONSERVATION STEWARDS AWARDS
- 18 TLC- Wild Wednesday: Pollination
- 21 Volunteer Day- Longleaf Pine Planting
- 21 CBI- "Getting What You Want at End of Life" Presentation by Jim Wagner & Eloise Harman
- 28 "Tree Identification" Walk led by Bob Simons
- 28 SANDHILL STAGE- Gatorbone Trio
- 31 "Bonsai with Natives" Presentation by John King

APRIL

- 4 "Native Plants" Walk led by Susan Marynowski
- 7 Grow Radio's The Conch: The Great Outdoors

- 8 "Suwannee River Ecosystem" Presentation by Ken Sulak
- 11 SANDHILL STAGE- Gosai & Ali
- 11 Grand Opening of Saarinen Preserve
- 15 TLC- Wild Wednesday: Earthday Explorations
- 18 "Birding by Ear" Walk led by Ivor Kincaide & Chris Burney
- 18 Hogtown Craft Beer Festival- ACT benefit at Tioga Town Center, *learn more below*
- 25 "Prairie Creek" Paddle Trip led by Mark Larson

MAY

- 2 Forage Farm- Wildflower Field Day & Native Pollinator Workshop
- 9 SANDHILL STAGE- The Currys
- 19 Volunteer Day- Sante Fe River Preserve Clean-up
- 29 SANDHILL STAGE- Flagship Romance & Friction Farm

Details for each event will be posted on ACT's website and via social media:
www.AlachuaConservationTrust.org

Get e-notices on upcoming events by joining our email list on ACT's website, or "liking" us on our Facebook page.



What { **HOGTOWN CRAFT BEER FESTIVAL**

When { **18TH APRIL, 2015**

Where { **TIOGA TOWN CENTER GAINESVILLE, FLORIDA**



PAINTING BY STEVE ANDREWS

Sample beers from various local, regional, and national breweries- and support ACT!

Once again, Alachua Conservation Trust is a charity partner for the 4th Annual Hogtown Craft Beer Festival on Saturday, April 18th, 2015 at Tioga Town Center. This year's event will offer another exciting lineup of beers, and some of the best food & cuisine from local restaurants and caterers.

learn more: WWW.HOGTOWNBEERFEST.COM



The wildlife
& its habitat
cannot speak.
So we must
& we will.

Theodore "T.R." Roosevelt

CONSERVATION STEWARDS AWARDS

SATURDAY, MARCH 14TH

5:30PM – 9:30PM

PRAIRIE CREEK LODGE

Each year, Alachua Conservation Trust honors individuals in our community who have made cultural and environmental protection a priority in their lives. Please join us at Prairie Creek Lodge on Saturday, March 14th as we acknowledge the 2015 Conservation Stewards.

Our theme this year, *"Voice for the Wild,"* is recognition of the overwhelming support given to Amendment 1 last November. It is also a reminder that nature needs vocal advocates. This year's honorees (below), all of whom have led and championed local and statewide conservation initiatives, are some of the most important advocates for wild

places in Florida.

The festivities kick-off with a social hour beginning at 5:30PM. It will be followed by a "local foods" dinner and the awards ceremony. We will wrap up the evening with a live musical performance by Michael Claytor & His Friends.

Tickets are \$65 and must be purchased in advance (ticket price increases to \$85 on March 1st). For additional information, driving directions to Prairie Creek Lodge, or to buy your tickets online, visit:

www.AlachuaConservationTrust.org

DOUG HORNBECK

Doug Hornbeck has been a steady volunteer for local conservation causes for decades. An environmental engineer by training, he was crucial in engineering the Alachua County Forever ballot initiative in 2000, and the Wild Spaces/Public Places campaign in 2008. In the past decade, he has become one of the area's strongest advocates for land restoration activities that involve intensive replanting of natives, the careful use of prescribed fire, and the relentless removal of invasive exotics; his most recent project is the Sweetwater, Boulware Springs, Flamingo Hammock multi-agency restoration effort along the north rim of Paynes Prairie. Doug and his wife Sue made a gift to ACT of a state-of-the-art off-road fire truck last year, and he continues to be a steady volunteer at Prairie Creek Conservation Cemetery, where his mother and aunt are buried; he makes all the grave-markers in his shop, and is leading a painstaking effort to re-introduce wildflowers into the meadows.

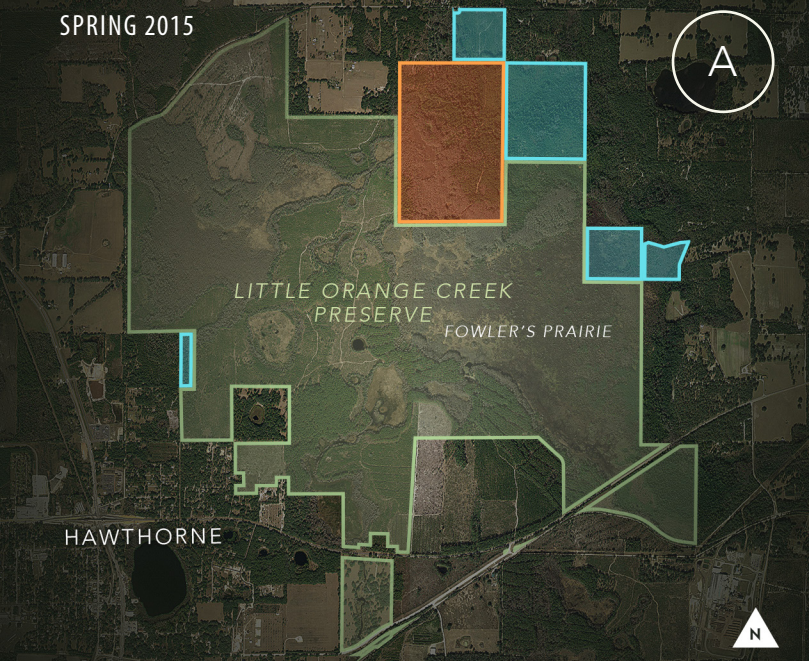
JERI BALDWIN

Jeri Baldwin is a true native of Marion County, and developed her passion for conservation early on a small, struggling farm north of Ocala. She shared this environmental ethic as a camp director for many years with programs that taught youngsters about tracking and identifying wildlife, camping, and sustainable living. For decades, Jeri has been spearheading efforts in Marion County to keep urban sprawl and development in check, and has

served as an officer in several conservation organizations. For the past 30 years, her work has focused on developing Crones' Cradle Conserve Foundation, a 756-acre ecological preserve, education center, and organic farm in north Marion County near her beloved Ocklawaha River.

SENATOR BOB GRAHAM

Bob Graham understands Florida's environment, having grown up in a South Florida ranching family. In his two terms as Florida's Governor, his administration added more acres of conservation land to the state's inventory than had been preserved in Florida's entire history prior to that. In the US Senate, he served on the Environment Committee during a time when progress was actually made on major environmental issues at the national level. Senator Graham co-chaired the committee investigating the Gulf Horizon oil spill disaster. He is famous for his hundreds of "work-days" where he has done every conceivable job that a Floridian might have, including many in the environmental fields. In the past couple of years, he has co-chaired the Florida Conservation Coalition, which has led the discussions about major state environmental issues, including springs protection, and most recently, championing the Water and Land Legacy constitutional amendment. He can often be found at the Graham Center on the UF campus where students participate in leadership-building activities that often include environmental policy issues.



ROOM to ROAM

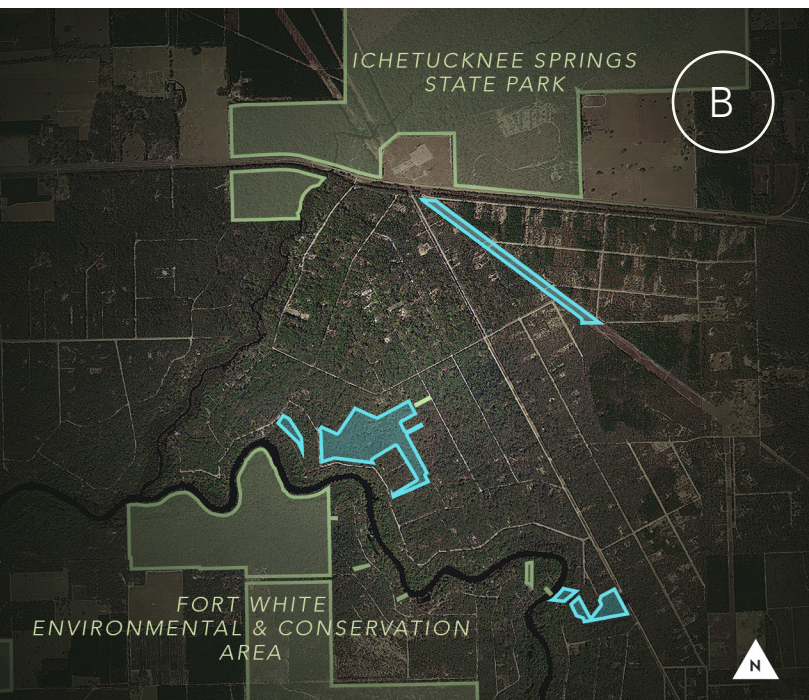
NEW PRESERVES AND RECENT EXPANSIONS

LITTLE ORANGE CREEK PRESERVE (A)

We asked and you answered! At last year's Conservation Stewards Awards, ACT kicked off its "Room to Roam" campaign with the goal of creating more habitat for wildlife and more wild places for people to explore, and with the generous support of ACT donors, three private philanthropic foundations, and the Alachua County Forever program, Little Orange Creek Preserve grew significantly in 2014. Five separate transactions added just over 225 acres (blue) to the preserve, which now totals 2,587 acres. This expansion will continue in 2015 with the purchase of another 238 acres (orange) in March using state wetland mitigation funds. After that, the next phase of the "Room to Roam" campaign will target the addition of 105 acres on the east side of the preserve.

In partnership with the City of Hawthorne, Putnam Land Conservancy, Conservation Trust for Florida, Alachua County Forever and Friends of Little Orange Creek Nature Park, Alachua Conservation Trust has been working diligently to create a cohesive conservation area that can more easily be managed as a whole. Ultimately, our plan is to acquire and conserve all of the remaining parts of the Fowler's Prairie basin and as much of the surrounding uplands as possible. The development of plans to restore the natural habitats of the preserve are ongoing and include the application of prescribed fire, feral hog management techniques, and the replanting of native grasses and vegetation. Additional land management efforts will focus on the restoration of the Pitcher Plant bog on Fowler's Prairie.

In 2015, we will be working to create a network of trails and observation platforms from which the public can view and enjoy this unique and wild part of Florida. Once this work is completed, activities such as hiking, biking, and horseback riding will be available to the public and highly encouraged. With your help, ACT intends to spread the benefits of its work on Little Orange Creek Preserve beyond the borders of the acreage it manages there by attracting visitors to the area and thereby creating opportunities for economic benefit that we hope will be felt in the nearby town of Hawthorne. We believe that by providing a recreational hub, this natural area will boost traffic in convenience stores, restaurants, and other businesses near the Preserve, and that by making it a day or weekend trip destination for Floridians, we can help these areas obtain the type of economic support other nearby towns such as Micanopy already enjoy.



HODOR PRESERVE (B)

Tucked between Ichetucknee Springs State Park to the North and the Ft. White Environmental and Conservation Area to the East, the brand new Howard I. Hodor Preserve is Alachua Conservation Trust's first-ever Preserve in Columbia County. It consists of nearly 110 acres (blue) of predominantly upland hardwood forest along the Santa Fe River. Teeming with wildlife and unspoiled habitat, the preserve is



slated to open for passive recreational use in late 2016.

Hodor Preserve will offer many new recreational opportunities in the area, ranging from hiking and canoeing to birding and mountain biking. In addition, we hope that the pristine O'Leno-Ichetucknee Trail to its north along with the wide variety of habitats and natural areas thriving within the Hodor Preserve itself will serve to attract nature lovers from around the region and prove to be a wonderful, one stop natural learning laboratory for all ages!

This preserve was a single-family donation of land, which makes it particularly special. Most of ACT's preserves were acquired lands, purchased either with private foundation funds, donations from ACT supporters like you, or with funding from federal, state or local government grants and various acquisition partnerships. The private donation of land in Florida is rare, but may be increasingly necessary for the continued protection and conservation of unique habitats. For the Hodor family, this gift made perfect sense. Their tremendous show of support for ACT's conservation efforts will permanently protect wildlife and provide opportunities for future generations to enjoy recreating in this unspoiled and natural landscape.

ROCKWOOD PARK (C)

The holidays may be over, but Don and Joanne Rockwood are still in the giving spirit! We are pleased to announce that the couple recently donated a 1-acre urban park (blue) to ACT that is scheduled for opening to the public in May of this year. The Donald Lee and Virginia Joanne Rockwood Park is located along the carriage road leading to Alfred Ring Park and, we hope, the future Glen Springs Park. This mostly-open green-space has the potential to serve as an invaluable asset to area residents as both a community garden and a tree-shaded

spot to take a stroll. Planned additions to the park will include informational signs that will help visitors appreciate the diverse tree populations found within it. We believe this generous donation will improve our urban community's relationship to nature and allow its visitors to further explore and be renewed by the serene areas that surround us even in unexpected settings.

Many, many thanks to both the Rockwood and the Hodor families for these visionary gifts.

Donations of land to ACT may be made outright, by life estate at the time of a person's death, or through a conservation easement that restricts future uses but does not directly confer ownership of the land to ACT. The latter option allows the landowner to retain private ownership of the land completely, but restricts development rights for any and all future owners. We welcome you to join ACT in its mission to conserve as much of natural Florida as possible, and encourage you to consider joining families like the Hodors and Rockwoods and gift your community with a donation of land to Alachua Conservation Trust today.

A new year is upon us and our goal remains the same: more room to roam for people and wildlife alike. Your support is crucial, and with it, we'll continue acquiring lands and restoring them for conservation and recreational purposes in North Central Florida.



NEW BOARD MEMBERS

This year, Alachua Conservation Trust welcomes two new members to its Board of Directors - Charlie Houser and Bruce DeLaney. Both have considerable experience in conservation real estate and deep ties to north central Florida.



CHARLIE HOUSER

Houser grew up in a Marine Corps family, living in New Mexico, South Carolina, and Virginia before moving to Brevard County during high school. He earned a degree in forestry from the University of Florida and worked for a regional consulting firm for 10 years. Joining the St. Johns River WMD in 1986 and moving to Suwannee River WMD in 1989, Charlie spent 28 years in public land acquisition and management. He now works with Natural Resource Planning Services and Saunders Real Estate, focusing on the conservation of working landscapes. After 38 years in natural resource assessment and management, Houser continues to address the key challenge in northeast Florida- how to maintain the full range of ecosystem services while accommodating a growing population.



BRUCE DELANEY

DeLaney grew up in Gainesville, obtained a degree in Biology from Emory University, and then returned to Gainesville where he enjoyed a 40-year career in real estate. For the past 31 years until retirement, he served as Assistant Vice President for Real Estate at the University of Florida Foundation. In that role, he oversaw many conservation land transactions and shepherded nearly 15,000 acres of land gifts to UF into public ownership. When conservation monies were scarce, he focused on urban landscapes, with an emphasis on making cities more attractive while reducing sprawl. Bruce spent the remainder of his career tackling urban redevelopment, serving as the founding chair of the College Park/University Heights Redevelopment Advisory Board, and was also involved with Innovation Square.

LAND MANAGEMENT UPDATE

BUILDING CAPACITY

It's rare when a small non-profit organization suddenly worries about having too many people to put to work, but this is a great problem to have when there is so much to do! This January, ACT was awarded a grant from the Americorps National Civilian Community Corps (NCCC), a team-based service program for young adults who want to give back to the community and learn new skills in the process. As a result, we will have a full-time 10-person crew to assist with ACT's resource and recreation management program. While here, the team will contribute over 2400 hours and help tackle a long list of projects that include building new trails and kiosks, cutting firelines, removing exotic plants and old fencing, and planting trees and native grasses. ACT will be opening two new properties to the public in 2015, and the NCCC team will help make this happen.

NEW PARTNERSHIPS

ACT is excited to be partnering with The Nature Conservancy and Wildland Restoration International (WRI) to address the long-standing need for prescribed fire in the region. Funded by an FWC State Wildlife Grant, WRI's Florida Ecosystem Restoration Team will help coordinate local prescribed burning so that limited resources are better shared between land managers in the region. Partners will also work together to advance the science of prescribed burning and educating the public about fire-dependent ecosystems from their base at Prairie Creek Preserve.

BATTLING LITTER BUGS AND INVADERS

Thanks to great turnouts, ACT's Volunteer Days are making a big difference. We unleashed small armies to deal with the trash problems at Prairie Creek and Santa Fe River Preserves, and thus far, we've removed more than 4000 pounds of garbage. In addition, volunteers addressed invasive exotic plants at Tusawilla Preserve, and successfully remove a trailer load of Tropical Soda Apple and Coral Ardisia in just one day!

PINES AND BOGS AT LITTLE ORANGE CREEK

Little Orange Creek Preserve will soon benefit from state funds ACT has secured for restoration efforts there. These funds will be used to execute the cooperative management plan that was approved by the various partners involved with the project, to include establishing firelines, conducting prescribed burns, and restoring the pitcher plant bog on Fowler's Prairie.

RYAN CROWDER MEMORIAL INTERNSHIP PROGRAM

Thanks to your generous contributions to ACT's internship fund, we have twelve energetic and committed students from the University of Florida and Santa Fe College this semester working on (and learning about) anything from natural resource management to small non-profit organization. ACT internships provide students with valuable, hands-on experience in conservation - *please consider donating to our internship program!*




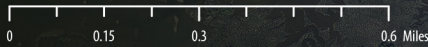
PHOTO: ACT intern, Kendyl Churchman, spreads seeds for native understory plants in a restoration area at Prairie Creek Preserve.

PRESERVE PROFILE:**WITHLACOCHEE GULF PRESERVE**

This 413-acre coastal preserve is owned and managed by the Town of Yankeetown, and the conservation easement is held by Alachua Conservation Trust. Yankeetown purchased the property with a grant from the Florida Community Trust.

Starting inland, pine forest and hardwood hammock soon fade into a vast expanse of saltmarsh with numerous tidal creeks meandering through. The variety and quality of habitats support a rich diversity of plants and animals, and a 3-story observation tower, canoe/kayak dock, and trail network make all of it very accessible. Learn more about this preserve at:

www.withlacocheegulfpreserve.com



WACCASASSA BAY PRESERVE
STATE PARK

YANKEETOWN

CROSS FLORIDA
GREENWAY

ACT: FACTS AT A GLANCE

- ① ESTABLISHED IN **1988** AS NON-PROFIT LAND TRUST
- ② DIRECTLY PARTICIPATED IN THE PURCHASE OF **17,415** ACRES
- ③ CURRENTLY OWNS **2995** ACRES, AND **2** HISTORIC BUILDINGS
- ④ PERPETUAL CONSERVATION EASEMENTS ON MORE THAN **3162** ACRES
- ⑤ HUNDREDS OF ACRES BURNED ANNUALLY
- ⑥ SUCCESSFULLY LED 4 PUBLIC REFERENDA, 2 FOR FUNDING **\$60 MILLION**, AND 2 FOR CREATING REGISTRY OF PROTECTED PUBLIC PLACES
- ⑦ OVER **550** ACTIVE SUPPORTERS WHO DONATE AT LEAST ONCE EVERY 2 YEARS
- ⑧ OVER **4000** VOLUNTEER AND COMMUNITY SERVICE HRS. IN THE PAST 12 MONTHS
- ⑨ **20,000** LONGLEAF PINES PLANTED
- ⑩ 1 OF ONLY 4 NATIONALLY ACCREDITED LAND TRUSTS IN FLORIDA
- ⑪ **10,000** WIREGRASS SEEDLINGS PLANTED
- ⑫ ACTIVE LAND CONSERVATION PROJECTS IN 8 COUNTIES OF NORTH CENTRAL FLORIDA

**A NATIONALLY RECOGNIZED LAND TRUST**

Out of 1700 land trusts across the country, Alachua Conservation Trust received the 2013 National Land Trust Excellence Award from the Land Trust Alliance. The award represents the highest single recognition that a land trust can receive in the United States.



ALACHUA CONSERVATION TRUST

7204 SE County Road 234
Gainesville, Florida 32641

ALACHUA CONSERVATION TRUST: THE NATURAL LEADER

BOARD of DIRECTORS

President- **Trey Greer**, Associate Director, University Writing Program - UF
Vice President- **Pegeen Hanrahan**, P.E., Environmental Consultant
Secretary- **Alison Blakeslee**, Private Investigator - Fisher & Blakeslee
Treasurer- **Mike Castine**, AICP, Senior Planner - Alachua County Growth Management
Anne Barkdoll, Ph.D., Biologist - Florida Div. of Recreation & Parks
Bill Bryson, Publisher/Business Owner
Fred Cantrell, University Business Affairs - UF, retired
Richard Hamann, J.D., Associate in Law, Ctr. for Gov't Responsibility - UF
Howard Jelks, Fish Biologist - U.S. Geological Survey
Laurel Nesbit, Program Assistant, Office of Sustainability - UF
Peter NeSmith, Botanist - Water & Air Research, Inc.
Charlie Houder, Certified Forester/Realtor - Saunders Real Estate Forestry Group
Bruce Delaney, Asst. VP for Real Estate - UF Foundation, retired

STAFF

Tom Kay, Executive Director
Ivor Kincaide, Land Manager
Mark Larson, Assistant Land Manager
Lesla Holder, Office Manager
Chris Burney, Project Manager

Resident Caretakers: Parker Titus, Seaton & Star Tarrant

Since 1988, the mission of Alachua Conservation Trust (ACT) has been to protect the natural, historic, scenic, and recreational resources in and around Alachua County, Florida. ACT protects land through purchase, donation, and conservation easement.

ACT is a 501(c)3 non-profit charity and receives no government grants for general operating support; we rely on contributions from private individuals, corporations, and foundations. Donations may be tax deductible, however ACT does not provide tax advice.

Alachua Conservation Trust's charitable solicitation number is **CH12693**. A copy of the official registration and financial information may be obtained from the Division of Consumer Services by calling toll-free (800) 435-7352. Registration does not imply endorsement, approval, or recommendation by the State.

ALTA
Fine Printing • Digital Printing • Mail Services



www.AlachuaConservationTrust.org



7204 SE County Road 234
Gainesville, FL 32641



(352) 373-1078



info@AlachuaConservationTrust.org

[facebook](#)